

BATHROOM RENOVATION

PROJECT PRESENTATION



INTRODUCTION

THE FOREMOST OBJECTIVE IS TO MAKE OVER AN ARCHAIC MASTER BATHROOM A MORE SPACIOUS AND APPEALING ONE.

DIMENSIONS WERE ACCURATELY TAKEN TO MAKE SURE THE PRODUCTS APT INTO PLACE AS PLANNED.

MODIFICATIONS FOR GAINING STORAGE SPACE AND IMPROVED LIGHTING WERE PRIORITIZED TO MAKE SURE THAT THE REFURBISHED BATHROOM STANDS THE TEST OF TIME.



BATHROOM PHOTOS



ELECTRONIC DESIGN (BEFORE)

Wall thickness: 35cm

Room height: 300cm

Floor dimensions: 150cm by 230cm

Shower area dimensions: 600cm by 520cm

Products selected

Shower panel 1650 by 800 by 620mm

Wash-down toilet 400 by 500mm

Bath 2000 by 1000mm

Double vanity washbasin 1500 by 560mm



DIGITAL MODEL (EXISTING BATHROOM)



DIGITAL MODEL (EXISTING BATHROOM)



ELECTRONIC DESIGN(PROPOSED MODEL)

The fixtures in this bathroom facelift were not changed.

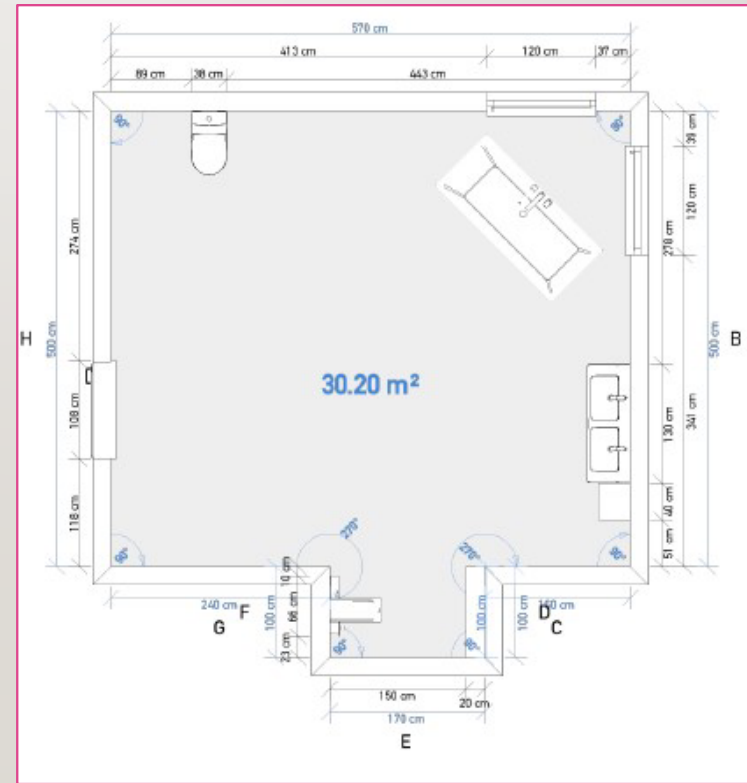
Bathroom backsplashes were fitted to prevent water from ruining the walls as well as giving it a new look.

Tall cabinet with dimensions 500 by 1600 by 400 mm was installed which increased storage space.

Front wall near the toilet was removed to give the additional space.

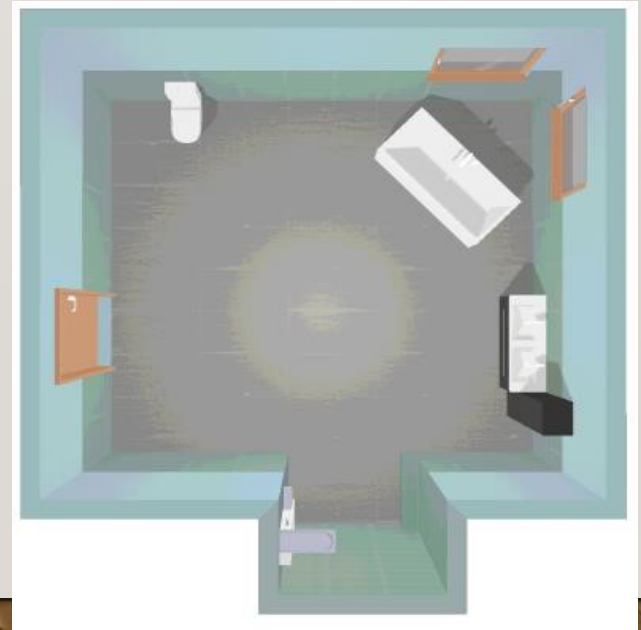
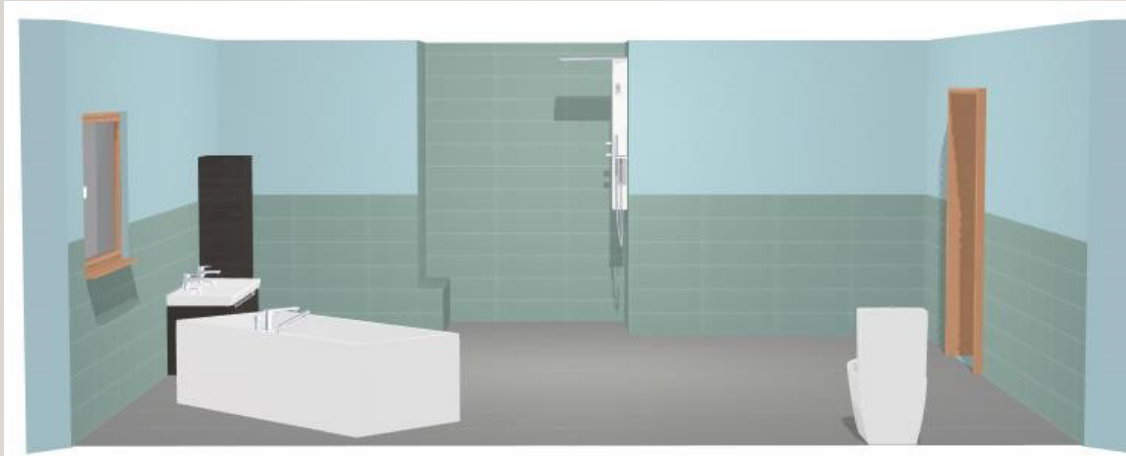
Bath was repositioned to make use of the available space.

Window repositioned to allow more light to enter the bathroom.

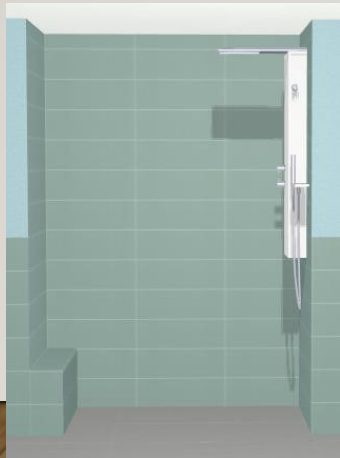


DIGITAL MODEL(PROPOSED BATHROOM)

Proposed model



PROPOSED MODEL



Edit with WPS Office

CALCULATIONS

The surface area of the floor= (600cm X 520cm) + (150cm X 230cm)
= 34.6m²

Window area= (150cm X 230cm)
= 3.45m²

Door area = (100cm X 150cm)
=1.5m²

Surface area of the walls excluding shower area: room height 300cm. SA= (400cm X 300cm) + (600cm X 300cm) + (200cm X 300cm) + (100cm X 300cm)
= 39m²

39m²-Window area - door area
= 39 - 3.45 - 1.5 = 34.05m²



CALCULATIONS

Backsplash tiles around the walls excluding shower area: tiles lifted at a height of 150cm. SA of the back splash tile = (600 X 150) + (520 X 150) + (400 X 150) + (250 X 150) + (300 X 150) = (560 X 150)

$$= 30.85\text{m}^2$$

Surface area of the floor = 30.85m²

Shower area floor = 200cm X 150

$$= 3\text{m}^2$$



CONCLUSION

The renovated bathroom with the backsplash tiles and the removal of unnecessary walls gave it a new look. The repositioning of the windows and bath allowed for better performance in terms of lighting and spaciousness for storage.